

WOODLAND SEVEN

CORPORATE PARK

7676 Interactive Way,
Indianapolis, IN

For Lease
Class A Office
New Construction

www.woodlandcorporateparkseven.com



CUSHMAN &
WAKEFIELD

Alidade
Capital



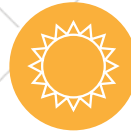
PROPERTY FEATURES



Fitness Center
with showers
and lockers



New Tenant
Social Hub



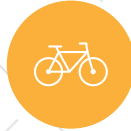
Outdoor
courtyard



437 parking spaces
with expansion



Divisible
floorplates



Bicycle
storage area



Secured
access



5/1,000 SF
parking ratio

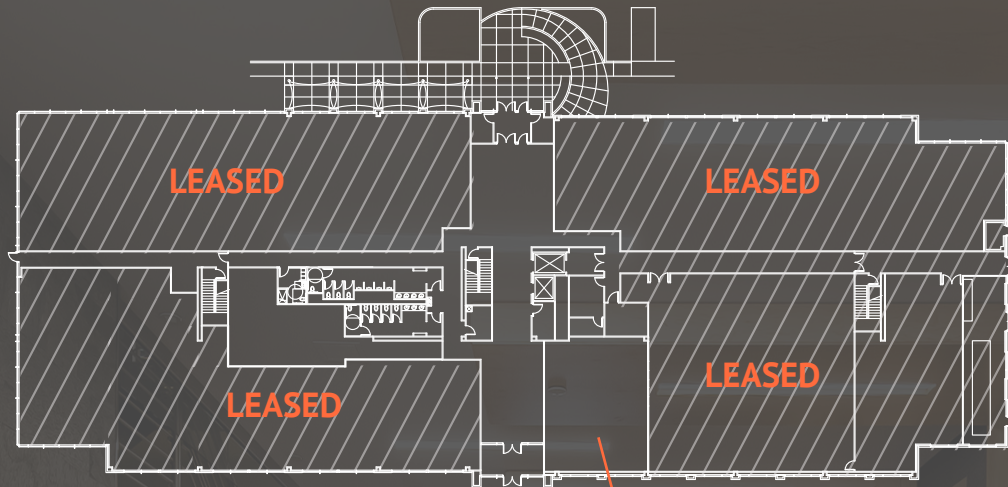


Approximately
92,195 vehicles
pass by daily



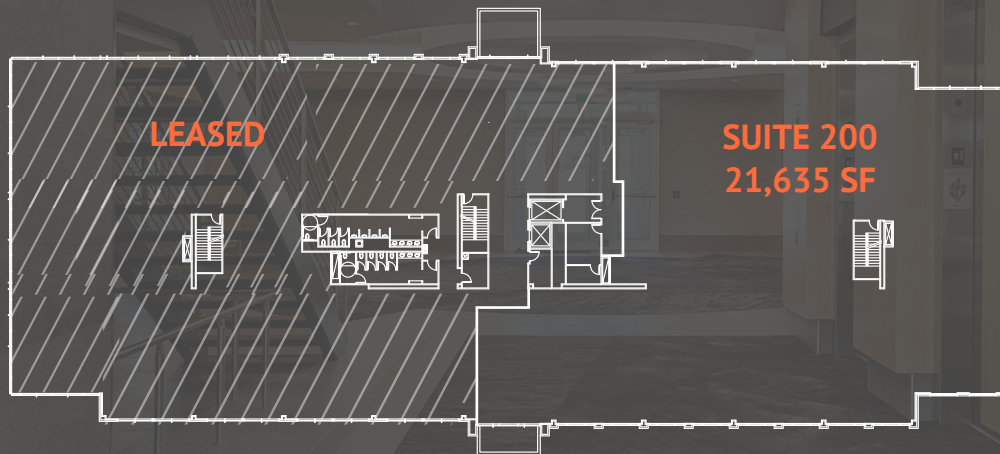
Woodland Corporate Park Seven is a Class A office building located in Northwest Indianapolis. With more than 118,000 SF, this brand new, high-quality shell offers the ability to customize the space. The efficient rectangular floor plates, large windows and I-465 visibility create a prime office space.

FLOORPLANS



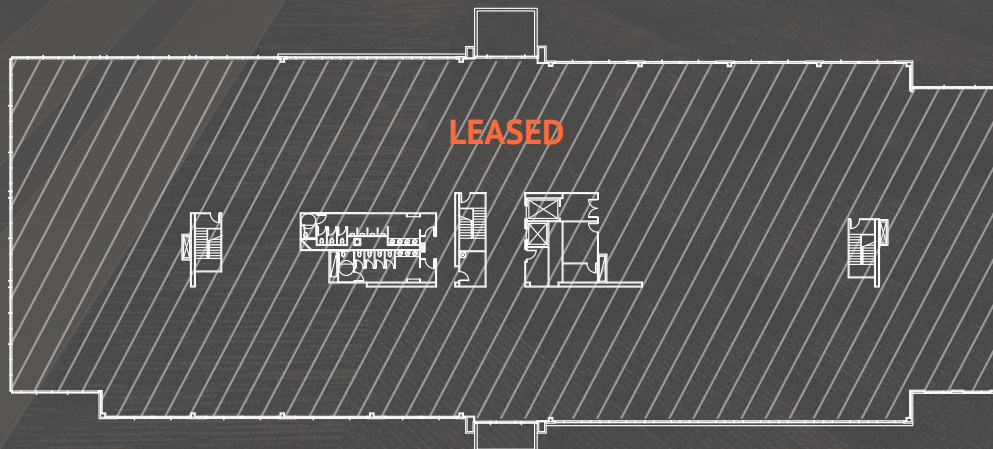
First Floor

SUITE 120
1,837 SF



SUITE 200
21,635 SF

Second Floor



Third Floor

PROPERTY SPECS | LEED FEATURES

4 power
transformers

2,000 KWh,
400 AMP
generator

Pads for
2 more
generators

State-of-the-art
systems

Data center

Geothermal
HVAC unit that
is 34% more
efficient than
code

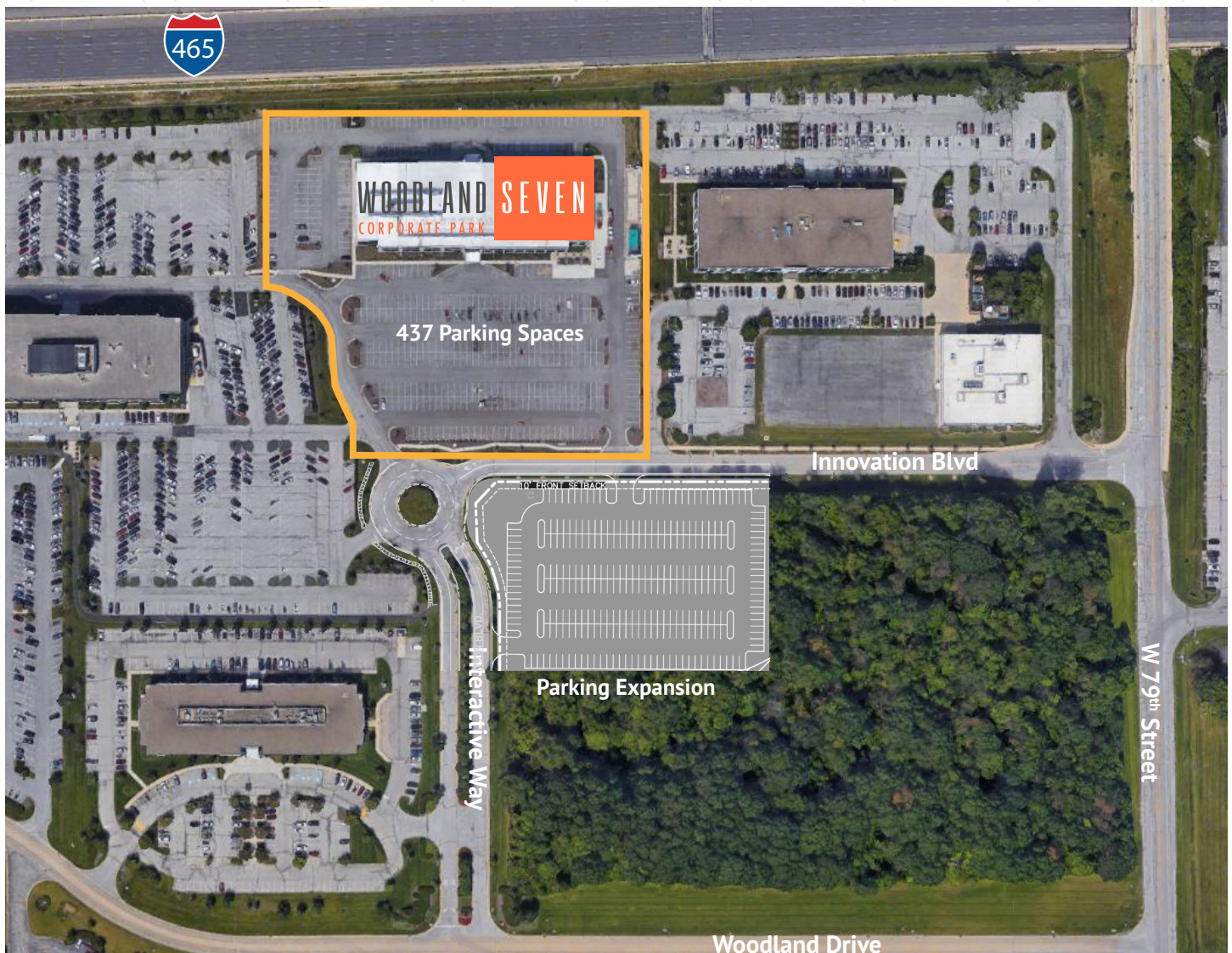
Enhanced
exterior glass

Energy efficient
TPO roof

LED exterior
lights

Water-
efficient
landscaping
& plumbing
features

Enhanced
refrigerant
management



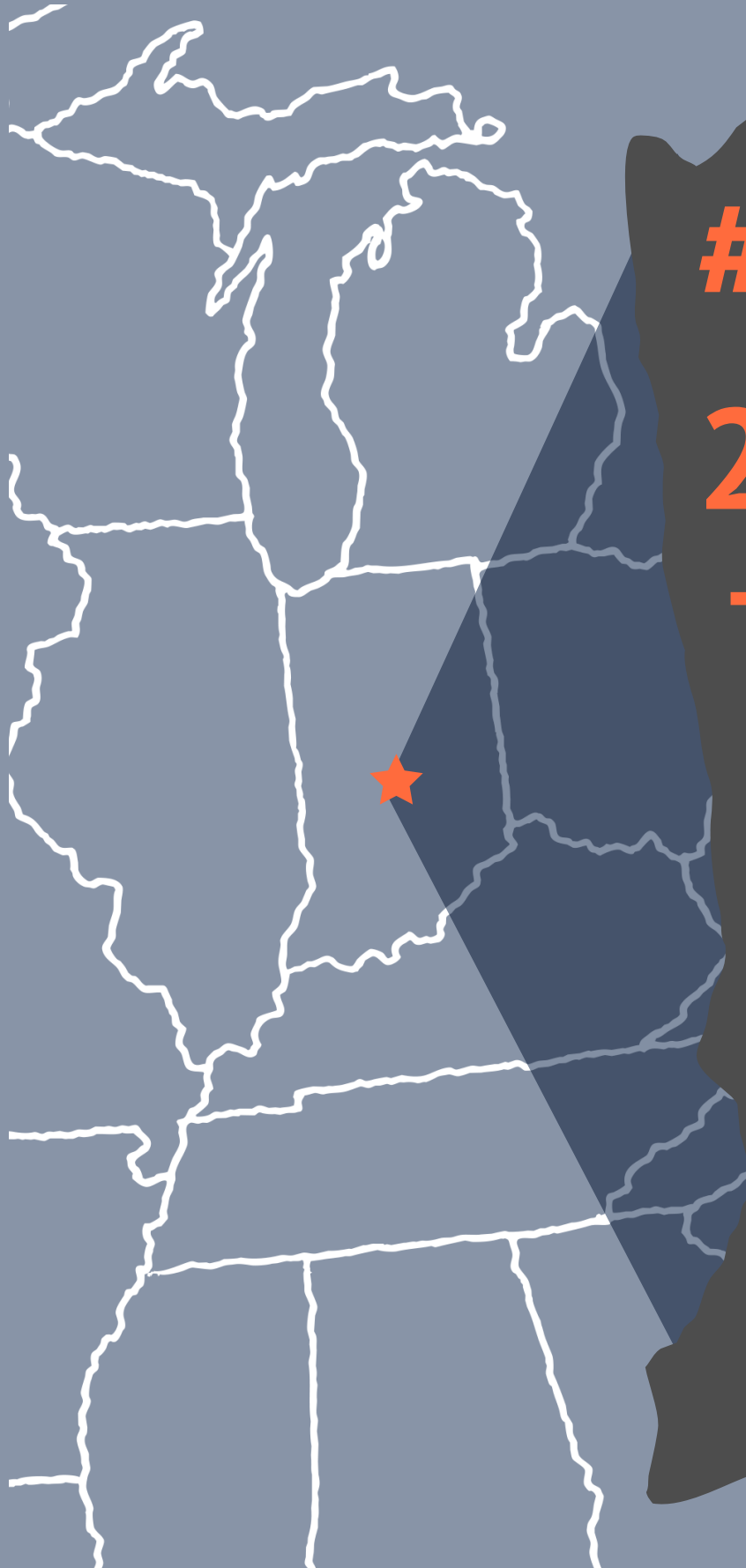


○ Services
 ○ Hotels
 ○ Banks
 ○ Restaurants

1. Concentra Urgent Care
2. Woodland Drive KinderCare
3. Wellfount Pharmacy
4. Day Early Learning
5. Dynamark Graphics Group
6. Custom Med Apothecary
7. Safedose Pharmacy
1. Candlewood Suites
2. Hampton Inn
3. Courtyard by Marriott
4. Best Western Plus
5. TownPlace Suites by Marriott
6. Hilton Garden Inn
7. Holiday Inn Express
8. Residence Inn by Marriott
9. Clarion Inn & Suites
1. BMO Harris Bank
2. FORUM Credit Union
3. Huntington Bank
4. Teachers Credit Union
1. Subway
2. McDonald's
3. Hardee's
4. Starbucks
5. HotBox Pizza
6. Jack's Donuts
7. LePeep

- 5604 W. 74th Street, Indianapolis, IN 46278
- 7221 Woodland Drive, Indianapolis, IN 46278
- 5751 W. 73rd Street, Indianapolis, IN 46278
- 5735 W. 73rd Street, Indianapolis, IN 46278
- 7210 Zionsville Road, Indianapolis, IN 46268
- 6005 W. 71st Street, Indianapolis, IN 46278
- 6970 Corporate Drive, Indianapolis, IN 46278
- 7455 Woodland Drive, Indianapolis, IN 46278
- 5860 W. 73rd Street, Indianapolis, IN 46278
- 7226 Woodland Drive, Indianapolis, IN 46278
- 7220 Woodland Drive, Indianapolis, IN 46278
- 5802 W. 71st Street, Indianapolis, IN 46278
- 6930 Intech Boulevard, Indianapolis, IN 46278
- 6240 Intech Commons Drive, Indianapolis, IN 46278
- 6220 Digital Way, Indianapolis, IN 46278
- 7001 Corporate Drive, Indianapolis, IN 46278
- 6410 Intech Commons Drive, Indianapolis, IN 46278
- 7023 Corporate Drive, Indianapolis, IN 46278
- 5605 W. 71st Street, Indianapolis, IN 46278
- 5130 W. 71st Street, Indianapolis, IN 46268
- 7118 Woodland Drive, Indianapolis, IN 46278
- 6056 W. 71st Street, Indianapolis, IN 46268
- 7217 Woodland Drive, Indianapolis, IN 46278
- 6320 Intech Commons Drive, Indianapolis, IN 46278
- 6260 Intech Commons Drive, Indianapolis, IN 46278
- 6260 Intech Commons Drive, Indianapolis, IN 46278
- 6335 Intech Commons Drive, Indianapolis, IN 46278

WHY INDIANA



#1

Leading the nation in manufacturing jobs Indiana is #1 for total state share of manufacturing employment, and we're the only location in the U.S. with assembly plants for Honda, Subaru and Toyota inside a single state.

2nd

America's top states for business – infrastructure - CNBC 2018

Top

U.S. states for business
- Chief Executive, 2018

#1

Most underrated city in the U.S., Indianapolis
- Forbes, 2018

#7

America's favorite cities "Locals love how surprised and impressed visitors are by Indy, which has a beautiful canal and striking architecture. Other reasons to love this Midwest city? Affordable prices and a friendly, accessible vibe." – Travel+Leisure, 2017

#1

The best airports in the U.S.
- Conde Nast Traveler



WOODLAND SEVEN

CORPORATE PARK

David A. Moore, SIOR, CCIM
Managing Director
+1 317 639 0490
david.moore@cushwake.com

Matt Boyd
Senior Associate
+1 317 985 2693
matt.boyd@cushwake.com

©2024 Cushman & Wakefield. All rights reserved. The information contained in this communication is strictly confidential. This information has been obtained from sources believed to be reliable but has not been verified. NO WARRANTY OR REPRESENTATION, EXPRESS OR IMPLIED, IS MADE AS TO THE CONDITION OF THE PROPERTY (OR PROPERTIES) REFERENCED HEREIN OR AS TO THE ACCURACY OR COMPLETENESS OF THE INFORMATION CONTAINED HEREIN, AND SAME IS SUBMITTED SUBJECT TO ERRORS, OMISSIONS, CHANGE OF PRICE, RENTAL OR OTHER CONDITIONS, WITHDRAWAL WITHOUT NOTICE, AND TO ANY SPECIAL LISTING CONDITIONS IMPOSED BY THE PROPERTY OWNER(S). ANY PROJECTIONS, OPINIONS OR ESTIMATES ARE SUBJECT TO UNCERTAINTY AND DO NOT SIGNIFY CURRENT OR FUTURE PROPERTY PERFORMANCE



**CUSHMAN &
WAKEFIELD**

Alidade
Capital