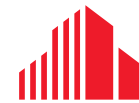


9292 N. MERIDIAN STREET

INDIANAPOLIS, IN

9292



**CUSHMAN &
WAKEFIELD**

PROPERTY HIGHLIGHTS

- Complete common area renovation completed
- Close proximity to U.S. 31 and I-465
- Signalized access at 93rd Street
- 20 minutes to Indianapolis International Airport
- 20 minutes to downtown Indianapolis
- Abundant parking

DARRIN BOYD, SIOR, CCIM

Managing Director
+1 317 590 8490
darrin.boyd@cushwake.com

DAVE MOORE, SIOR, CCIM

Managing Director
+1 317 639 0490
david.moore@cushwake.com

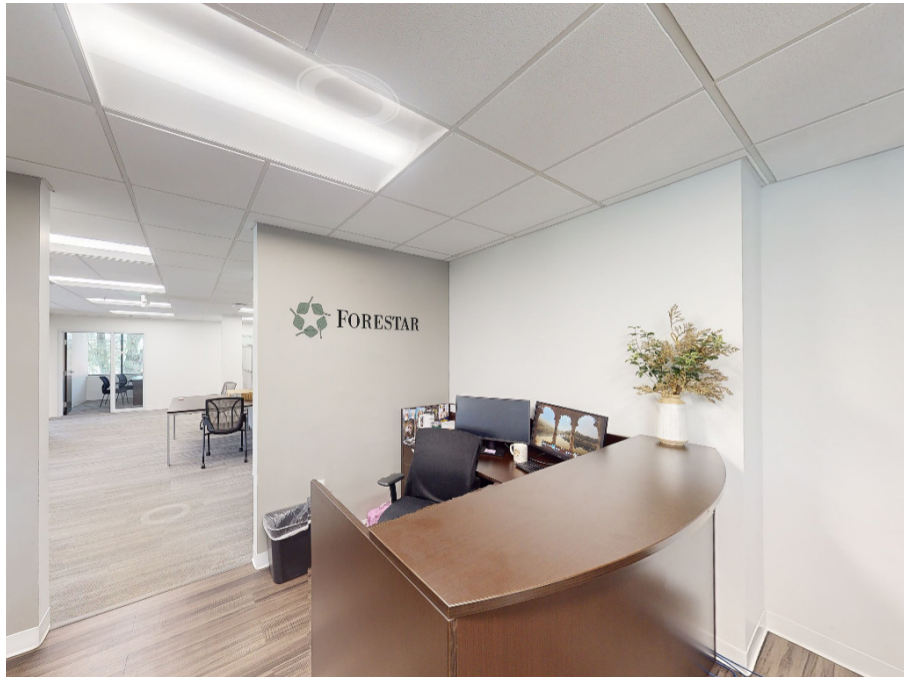
One American Square, Suite 1800
Indianapolis, IN 46282
+1 317 634 6363

cushmanwakefield.com

©2026 Cushman & Wakefield. All rights reserved. The information contained in this communication is strictly confidential. This information has been obtained from sources believed to be reliable but has not been verified. NO WARRANTY OR REPRESENTATION, EXPRESS OR IMPLIED, IS MADE AS TO THE CONDITION OF THE PROPERTY (OR PROPERTIES) REFERENCED HEREIN OR AS TO THE ACCURACY OR COMPLETENESS OF THE INFORMATION CONTAINED HEREIN, AND SAME IS SUBMITTED SUBJECT TO ERRORS, OMISSIONS, CHANGE OF PRICE, RENTAL OR OTHER CONDITIONS, WITHDRAWAL WITHOUT NOTICE, AND TO ANY SPECIAL LISTING CONDITIONS IMPOSED BY THE PROPERTY OWNER(S). ANY PROJECTIONS, OPINIONS OR ESTIMATES ARE SUBJECT TO UNCERTAINTY AND DO NOT SIGNIFY CURRENT OR FUTURE PROPERTY PERFORMANCE.

9292 N. MERIDIAN STREET

INDIANAPOLIS, IN



DARRIN BOYD, SIOR, CCIM
Managing Director
+1 317 590 8490
darrin.boyd@cushwake.com

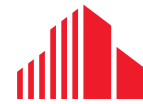
DAVE MOORE, SIOR, CCIM
Managing Director
+1 317 639 0490
david.moore@cushwake.com

One American Square, Suite 1800
Indianapolis, IN 46282
+1 317 634 6363

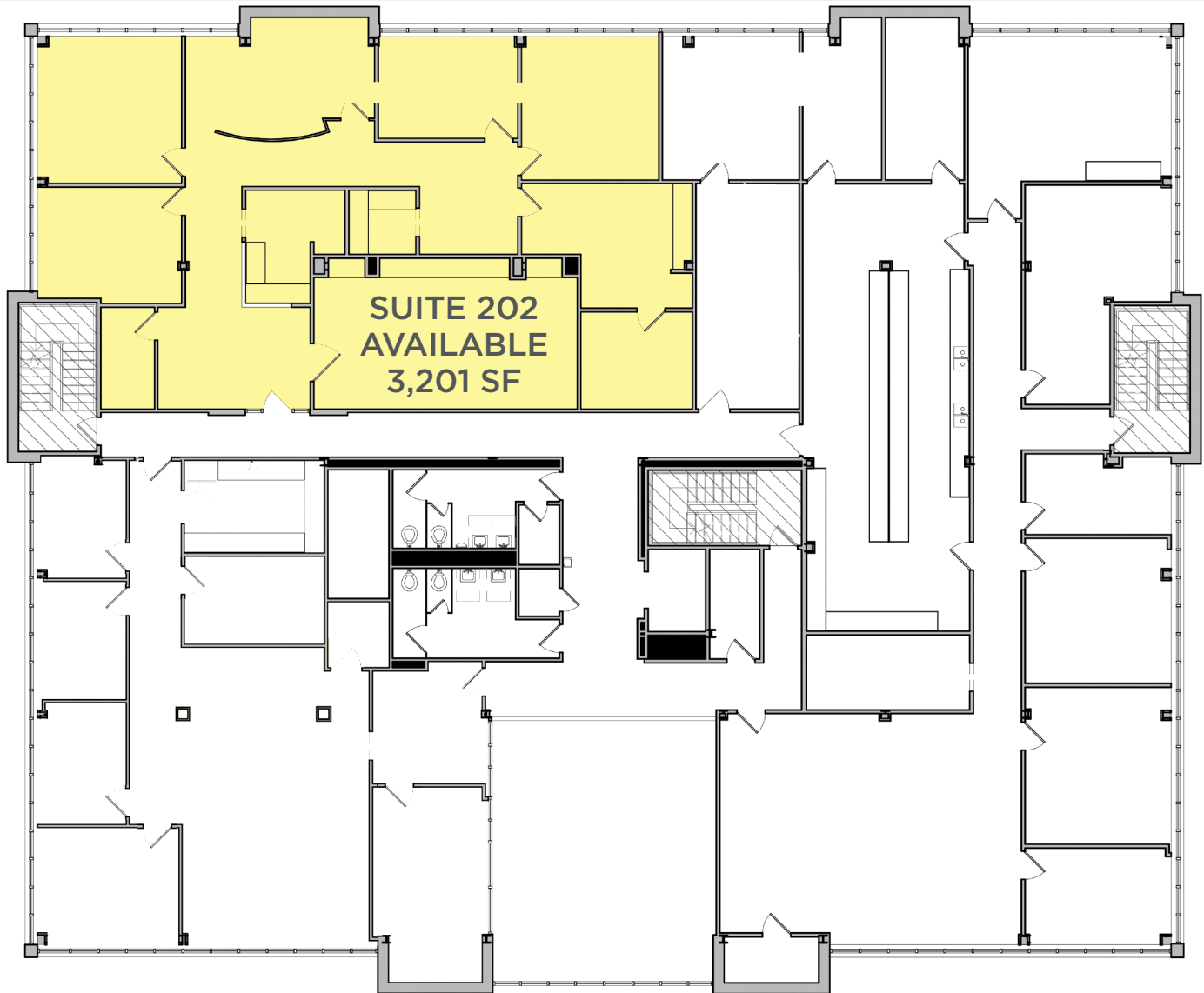
cushmanwakefield.com

9292 N. MERIDIAN STREET

INDIANAPOLIS, IN



CUSHMAN &
WAKEFIELD



DARRIN BOYD, SIOR, CCIM

Managing Director
+1 317 590 8490
darrin.boyd@cushwake.com

DAVE MOORE, SIOR, CCIM

Managing Director
+1 317 639 0490
david.moore@cushwake.com

One American Square, Suite 1800
Indianapolis, IN 46282
+1 317 634 6363

cushmanwakefield.com

©2026 Cushman & Wakefield. All rights reserved. The information contained in this communication is strictly confidential. This information has been obtained from sources believed to be reliable but has not been verified. NO WARRANTY OR REPRESENTATION, EXPRESS OR IMPLIED, IS MADE AS TO THE CONDITION OF THE PROPERTY (OR PROPERTIES) REFERENCED HEREIN OR AS TO THE ACCURACY OR COMPLETENESS OF THE INFORMATION CONTAINED HEREIN, AND SAME IS SUBMITTED SUBJECT TO ERRORS, OMISSIONS, CHANGE OF PRICE, RENTAL OR OTHER CONDITIONS, WITHDRAWAL WITHOUT NOTICE, AND TO ANY SPECIAL LISTING CONDITIONS IMPOSED BY THE PROPERTY OWNER(S). ANY PROJECTIONS, OPINIONS OR ESTIMATES ARE SUBJECT TO UNCERTAINTY AND DO NOT SIGNIFY CURRENT OR FUTURE PROPERTY PERFORMANCE.