



8801 – 8805 N MERIDIAN

INDIANAPOLIS, IN 46260

FOR LEASE

PROPERTY DETAILS

Available For Lease

Located on the highly traveled
North Meridian Corridor

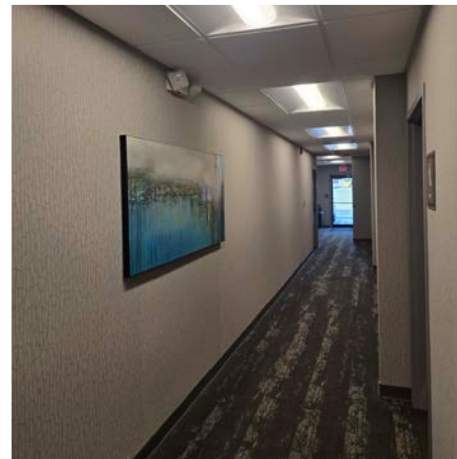
High visibility from Meridian Street
with signage opportunities available

Convenient access to I-465

Located between Ascension St. Vincent Indianapolis
Hospital and IU Health North Hospital in major
healthcare-oriented area

Ample parking

Several amenities nearby



LOCATION AND CONNECTIVITY

MAJOR RETAILERS

- Target
- Walmart
- CVS Pharmacy
- Home Depot
- Meijer
- Aldi
- FedEx
- Foot Locker

RESTAURANTS

- Starbucks
- Chili's
- Burger King
- Taco Bell
- iHop
- Golden Corral
- Papa John's
- Dairy Queen
- Subway
- KFC



DEMOGRAPHICS

	1-MILE	3-MILE	5-MILE
POPULATION	6,406	63,213	180,558
HOUSEHOLDS	3,099	29,416	80,349
AVERAGE HOUSEHOLD INCOME	\$109,871	\$108,338	\$113,587





Darrin Boyd, SIOR, CCIM
Managing Director
+1 317 590 8490
darrin.boyd@cushwake.com

Matt Boyd
Senior Associate
+1 317 985 2693
matt.boyd@cushwake.com

