

SYMPHONY CENTRE

Built in 1912, and formerly known as Washington Place, this 17-story brick and limestone structure that once housed the luxurious Hotel Washington and, at that time, was the tallest hotel in Indiana. Noted for its ornate Classical Beaux Arts architectural style, the building was designed by prominent Indiana architect Robert Frost Daggett and has remained as one of the distinctive landmarks in the downtown Indianapolis skyline, which led to its listing on the National Register of Historic Places.

The original Hotel Washington offered its guests and clientele the finest facilities available in the early 20th century. A spacious lobby, shops, parlors, lounges, assembly halls and a basement restaurant known as "Cafe George" complemented the guest rooms and suites.

In 1938, the Alabama and Ohio Realty Company sold the facility to the Benson Hotel Company who, after some renovation, continued operation until 1963. The property then passed through a series of owners over the next three decades during which it existed as apartments, custom suites, offices and banquet rooms under various names including Hotel Washington, Washington Tower Apartments and Washington Place.

When the Indianapolis Symphony Orchestra moved into the Hilbert Circle Theatre in 1984, it leased the basement floor of Symphony Centre to house its music library and the musicians' dressing rooms. The building is adjacent to the rear of the Theatre, and the facilities are connected. With an increasing need to expand its current scope of activities, the Indianapolis Symphony Orchestra Foundation bought the building in January 1997.

These facilities house the expanded dressing room space for musicians, rehearsal rooms, a larger music library and artistic production, construction and storage facilities. Perhaps most significant, Symphony Centre contains space for present and future educational endeavors. Additionally, all of the Orchestra's administrative offices have been combined into one area with direct connections to the performance space in the Hilbert Circle Theatre.

Guest artist dressing rooms have been relocated to the backstage area. Audience members have direct access to a new Green Room where they may greet conductors, soloists and orchestra musicians following concerts.

INDIANAPOLIS SYMPHONY ORCHESTRA

One of the nation's finest musical ensembles, the internationally-acclaimed Indianapolis Symphony Orchestra continues its upward spiral of artistic excellence.

Since 1987, the Orchestra's music director has been Raymond Leppard, a conductor of brilliant achievement on the concert stage and in the recording studio. Leppard is the Indianapolis Symphony Orchestra's fifth music director since its founding in 1930.

The orchestra performs 200 concerts each year to an audience of more than 500,000 people. In addition to the many concerts in its home, the magnificent Hilbert Circle Theatre in the heart of the city, the Indianapolis Symphony Orchestra is regularly heard in communities around Indiana and at the Marsh *Symphony on the Prairie* series at Conner Prairie each summer.

Since 1994, the Orchestra has been heard in over 170 radio markets covering 41 states across the country on a syndicated series of one-hour broadcasts now titled "Eli Lilly and Company Presents Indianapolis On-The-Air." In central Indiana the Orchestra is heard twice weekly over WFYI Radio 90.1 FM.

Triumphant tours throughout the United States have familiarized the nation's concert goers with the excellence of the Indianapolis Symphony Orchestra. Three visits to the music capitals of Europe in the last decade have brought the Orchestra rave comments from yet another part of the world.

The Indianapolis Symphony Orchestra continues to attract and inform new audiences of all ages through programs like the innovative Studio Series, which features musical analysis by Maestro Leppard; the Words on Music pre-concert discussions; the Young People's Discovery Concerts for grades 4-6; the Michael Ben and Illene Komisarow Maurer Young Musicians Contest, whose winner appears as soloist with the Orchestra; and the Side-by-Side program for talented high school music students.

The classical discipline and musical achievement of the 87-member Indianapolis Symphony Orchestra are firmly supported by classic performance from the management team, an enthusiastic and committed board of directors, a highly-qualified staff, the support of numerous volunteers and generous financial contributions from individuals and corporations to the Orchestra's Annual Fund and endowment programs.

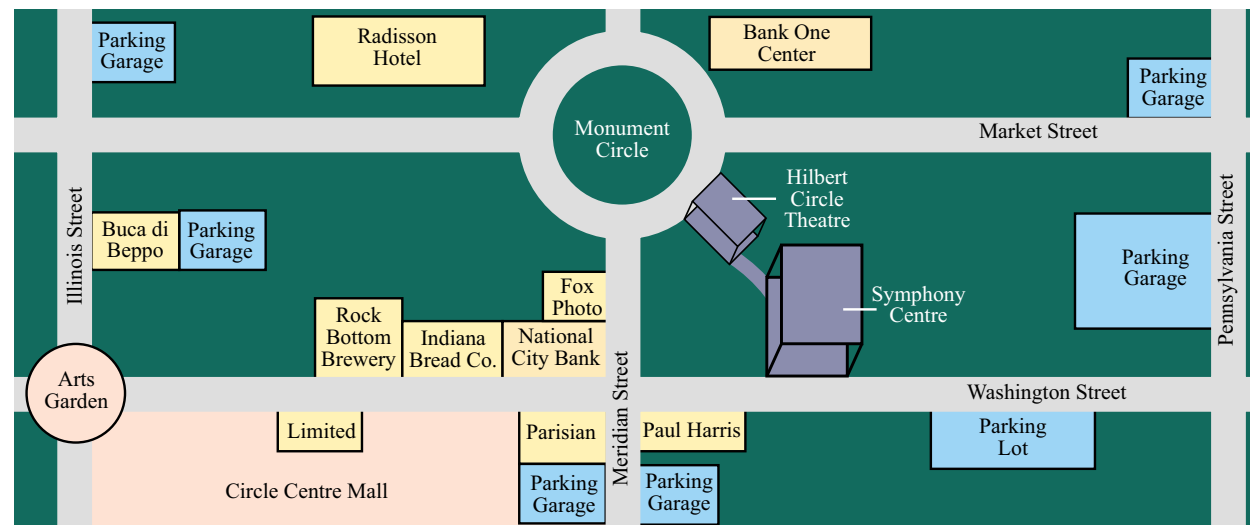
COLLIERS
INTERNATIONAL

TURLEY
MARTIN
TUCKER

Symphony Centre



INDIANAPOLIS
SYMPHONY ORCHESTRA®



500 - 35,000 Square Feet Available
32 East Washington Street
Indianapolis, Indiana 46204

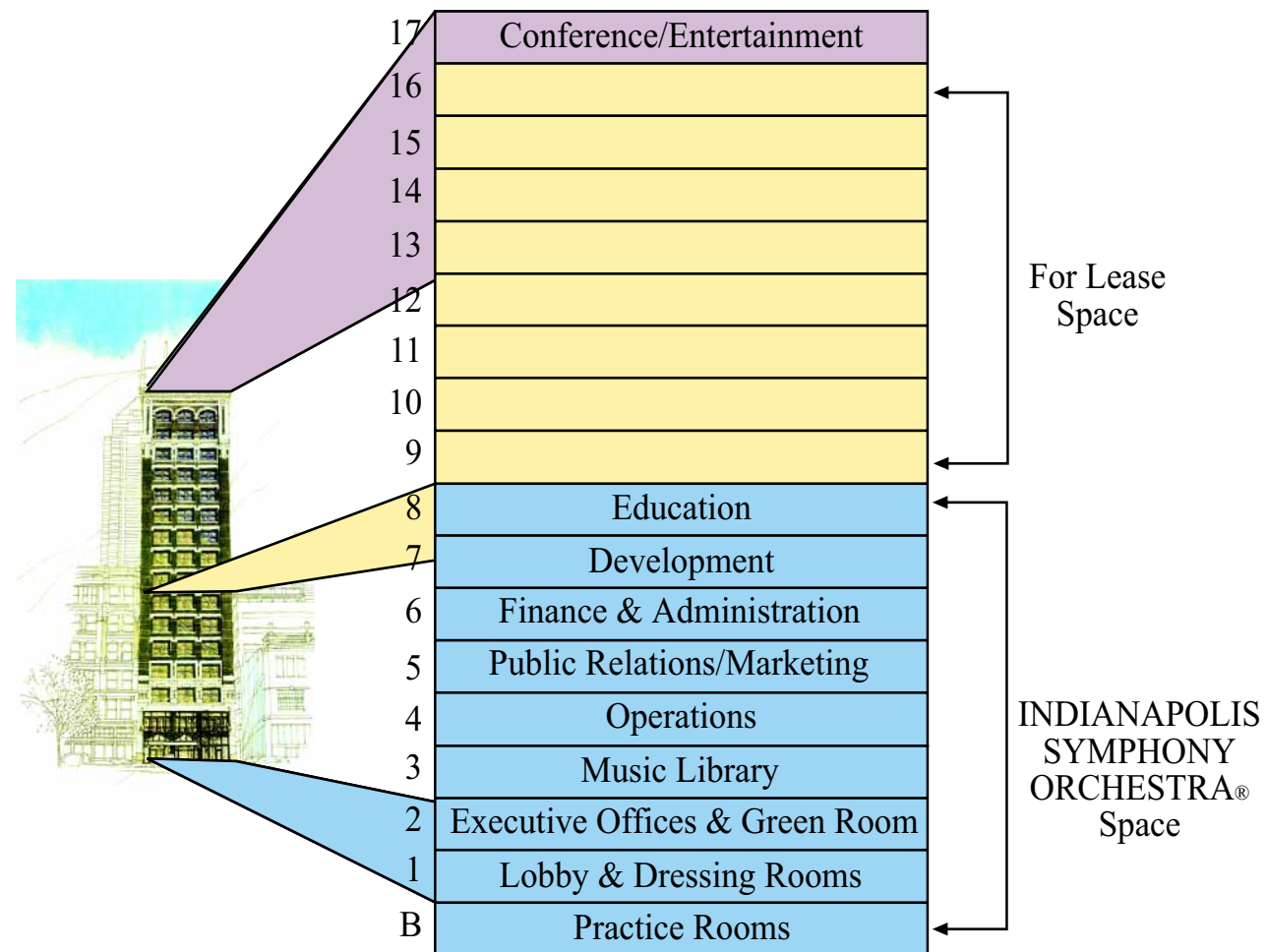
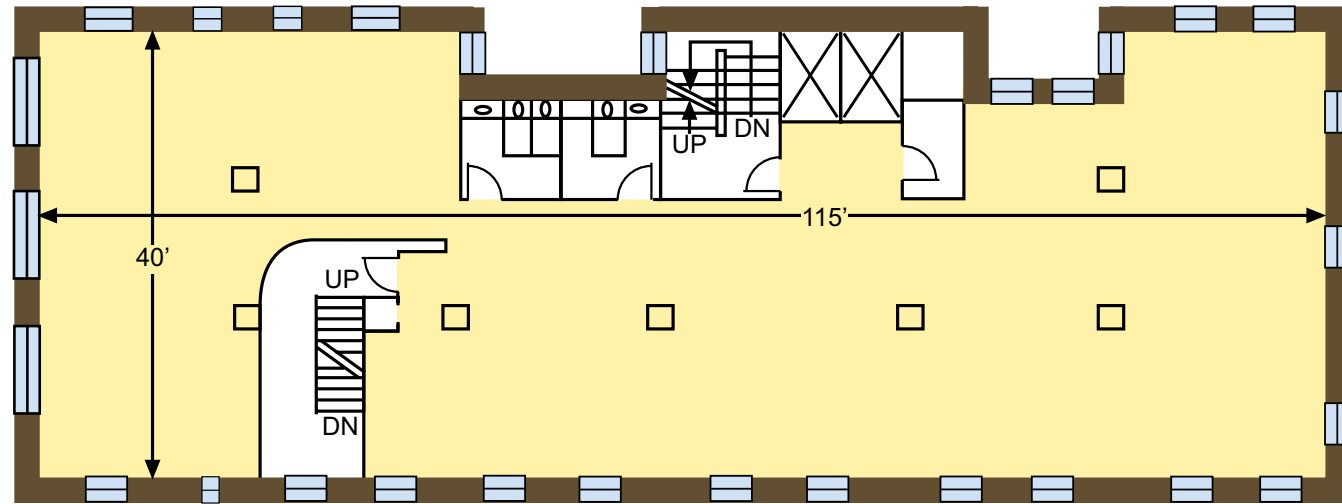
For more information, please contact:
David A. Moore, SIOR, CCIM
Colliers Turley Martin Tucker
(317) 639-0490 (Direct)
(317) 639-0504 (Fax)
E-mail: dmoore@ctmt.com



2500 One American Square
Indianapolis, Indiana 46282

Telephone 317-639-0515
Telefax 317-639-0504
www.ctmt.com





- 🎯 \$3.6 million renovation to be complete by Summer 1998
- 🎯 Total floor size (4,300 sq. ft.) provides smaller tenants with more windows and full floor capability
- 🎯 Upper floors 9-16 available for lease
- 🎯 On-site security guard with video surveillance
- 🎯 Conference entertaining area on 17th floor (top floor)
- 🎯 Completely renovated lobby and elevator cabs

General Specifications:

Number of Floors: 17 (9-16 for lease)
Lease Term: 3-10 years
Lease Type: Full service
Owner/Manager: Indianapolis Symphony Orchestra
Leasing Agent: F.C. Tucker Company, Inc.